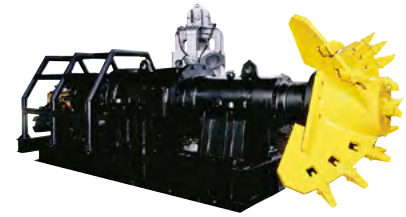


TOYO SUBMERSIBLE EXCAVATOR

PK(ELECTRIC DRIVE)



FEATURE

- PK is additional equipment to submersible pumps. Number of equipment and cutting blades are selectable according to the application.

OUTPUT	7.5~37kw
--------	----------

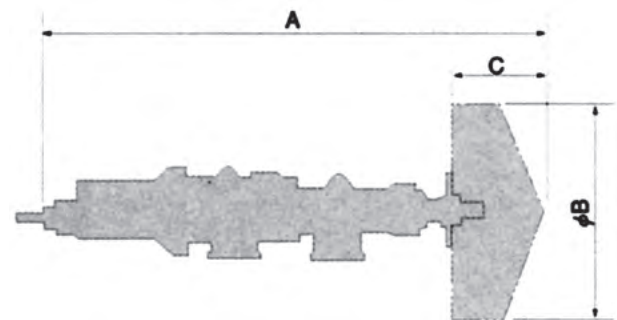
SPECIFICATION

MODEL	MOTOR		REDUCTION RATIO	◇CUTTING BLADE		WEIGHT (kg)	CABTYRE CABLE LENGTH: 10m (Symbol x mm ² x core)
	OUTPUT (kw)	POLE (P)		REVOLUTION (r/min)	RATED TORQUE (kgm)		
PK-10K *	7.5	4	1/59	24.5	269	600	3PNCT×8 [#] ×4C
PK-10K *	7.5	4	1/59	29.3	225	600	3PNCT×8 [#] ×4C
PK-20 *	15	6	1/43	22.6	582	1400	3PNCT×14 [#] ×4C
PK-20 *	15	6	1/43	27.1	486	1400	3PNCT×14 [#] ×4C
PK-30 *	22	6	1/43	22.7	850	2000	3PNCT×38 [#] ×3C•3.5 [#] ×1C
PK-30 *	22	6	1/43	27.2	710	2000	3PNCT×38 [#] ×3C•3.5 [#] ×1C
PK-50 *	37	6	1/43	27.3	1424	3800	3PNCT×50 [#] ×3C•8 [#] ×1C
PK-50 *	37	6	1/43	27.3	1189	3800	3PNCT×50 [#] ×3C•8 [#] ×1C

- Specifications are changeable without notice. Please ask for Specification Sheet for the details.
- ◇ Weight excludes the cutting blades.
- * only 50Hz available.
- * only 60Hz available.

SIZE

MODEL	A	B(MAX)	C(MAX)
PK-10K	2657	1000	475
PK-20	2920	1200	530
PK-30	3382	1500	635
PK-50	4086	1700	810



- Specifications are changeable without notice. Please ask for Specification Sheet for the details.