

**TOYO SUBMERSIBLE NON-CLOG AGITATOR SAND PUMP**

**K/KE**

**FEATURE**

- Specially invented cylindrical Cutter Fan (agitator) is installed and it effectively agitators the sediments.
- Cylindrical Cutter Fan (agitator) and non-clogging impeller prevents clogging and winding of fibrous material.
- The shaft does not go through impeller and it makes the solid of bigger size passable.
- Double mechanical seals are adopted and detecting room prevents water getting into motor room.
- Original amphibious motor is adopted, it allows the water depth as lower as possible.
- Hi-Chrome casting iron is used in Impeller and Cylindrical Cutter Fan, it has extreme durability against abrasion and long life-time.
- Thermal protector is installed. A snorkel suction pipe for supernatant liquid to adjust the concentration is available as optional equipment.



**K**



**KE**

DISCHARGE BORE	80~100mm
OUTPUT	2.2~30kw
SOLID SIZE	56~70mm

**SPECIFICATION**

MODEL		BORE (mm)	STANDARD		SOLID SIZE (mm)	MOTOR		WEIGHT (kg)		CABTYRE CABLE	
K	KE		HEAD (m)	CAPACITY (m³/min)		OUTPUT (kW)	POLE (P)	K	KE	POWER	SENSOR
K-3	KE-3	80	8	0.5	56	2.2	4	170	160	5.5#×4C	1.25#×2C
K-5	KE-5	80	13	0.5	56	3.7	4	180	170	5.5#×4C	1.25#×2C
K-7.5B	KE-7.5B	100	11	1	70	5.5	4	240	225	5.5#×4C	1.25#×2C
K-10 *	KE-10 *	100	16	1	70	7.5	4	260	245	5.5#×4C	1.25#×2C
K-10 *	KE-10 *	100	15	1	70	7.5	4	260	245	5.5#×4C	1.25#×2C
K-15	KE-15	100	15	1.5	70	11	4	355	350	8#×4C	1.25#×2C
K-20	KE-20	100	20	1.5	70	15	4	395	390	14#×4C	1.25#×2C
K-30	KE-30	100	30	1.5	70	22	4	770	750	38#×3C+3.5#×1C	1.25#×2C
K-40	KE-40	100	40	1.5	70	30	4	100	980	38#×3C+3.5#×1C	1.25#×2C

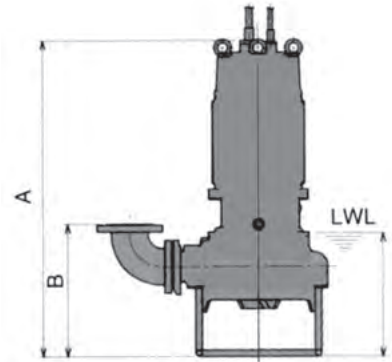
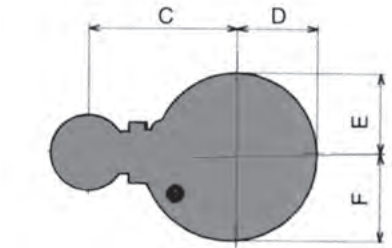
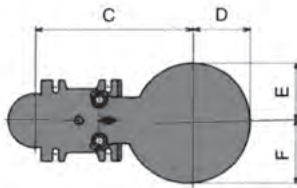
- Specifications are changeable without notice. Please ask for Specification Sheet for the details.
- \* only 50Hz available.
- \* only 60Hz available.

## SIZE

Unit : mm

MODEL	A	B	C	D	E	F	LWL
K-3	786	375	363	196	196	215	350
K-5	896	375	363	196	196	215	350
K-7.5B	966	426	443	238	228	248	380
K-10	1020	426	443	238	228	248	380
K-15	1177	490	478	261	251	271	450
K-20	1246	490	478	261	251	271	450
K-30	1442	548	618	330	320	340	580
K-40	1657	548	618	330	320	340	580

- Specifications are changeable without notice. Please ask for Specification Sheet for the details.

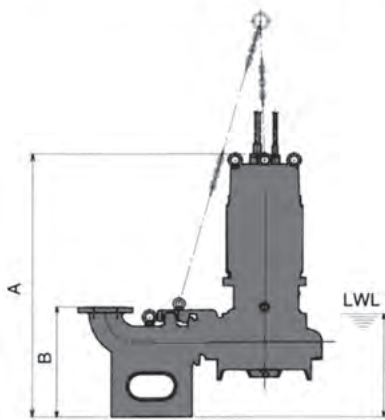


## SIZE

Unit : mm

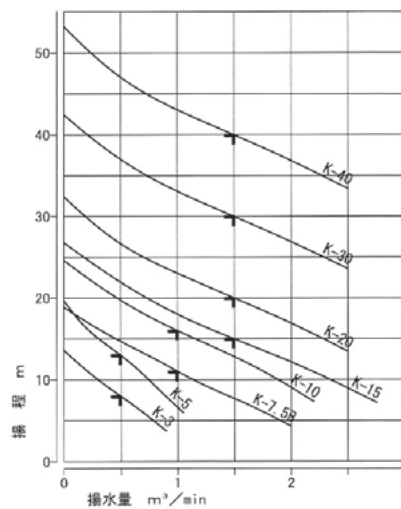
MODEL	A	B	C	D	E	F	LWL
K-3	876	375	540	196	196	215	350
K-5	896	375	540	196	196	215	350
K-7.5B	965	405	630	238	228	248	380
K-10	1019	405	630	238	228	248	380
K-15	1177	475	733	261	251	271	450
K-20	1246	475	733	261	251	271	450
K-30	1444	535	833	330	320	340	580
K-40	1659	535	833	330	320	340	580

- Specifications are changeable without notice. Please ask for Specification Sheet for the details.



## PERFORMANCE CURVES

50Hz 4P...1500r/m



60Hz 4P...1800r/m

